
Annual Report

2020/2021

BREMER COUNTY HEALTH DEPARTMENT

403 3rd Street SE
Waverly, IA 50677
(319) 352-0082

Department Profile

Mission

The Bremer County Health Department promotes, protects, and preserves health through leadership, service, education, prevention practices and partnerships.

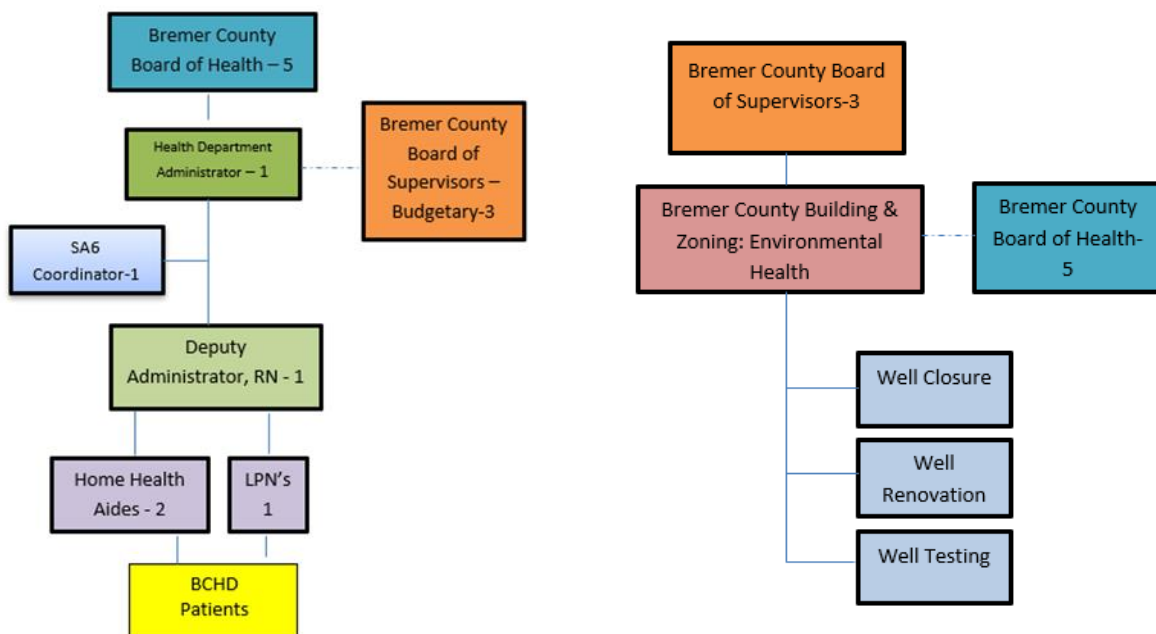
Vision

Building a Healthier Bremer County

Department Governance

The Bremer County Health Department (BCHD) is governed by the Bremer County Board of Health, which consists of five member who donate their time to Bremer County under the authority of [Chapter 137 of the Code of Iowa](#).

Board of Health	Board of Supervisors
Courtney Bochmann, DO	Ken Kammeyer
Amanda Gesme	Dewey Hildebrandt
Dewey Hildebrandt	Tim Neil
Matt Sexton, DVM	
Sally Yungtum, RN	



Department Revenues

July 1, 2020-June 30, 2021

Revenue Category	FY21 YTD	% of Total
Transfer from Bremer County General Fund	\$250,000.00	31.62%
Private Pay Home Health Services	\$7,364.50	0.93%
Private (Commercial) Insurance	\$126,736.75	16.03%
Flu/Vaccines	\$10,484.93	1.33%
Foot Clinics	\$16,075.00	2.03%
Medicare	\$115,274.92	14.58%
Immunization Services Grant	\$16,712.04	2.11%
PHEP Grant	\$91,343.17	11.55%
Emergency Response Grant	\$10,273.36	1.30%
CARES ACT	\$63,405.69	8.02%
Local Board of Health Grant	\$79,432.60	10.05%
Miscellaneous Reimbursement	\$3,440.96	0.44%
Total BCHD Generated Revenue	\$790,543.92	100.00%
Percent of BCHD Budget Received		98.89%

Department Expenditures

July 1, 2020-June 30, 2021

Expense Category	FY21 YTD	% of Total
Salary/Wages	\$394,887.64	49.95%
Employee Benefits	\$147,354.91	18.64%
Advertising	\$299.32	0.04%
Cost Reporting	\$2,320.00	0.29%
Data Processing Software & Office Equipment	\$52,760.26	6.67%
Document Disposal Services	\$1,085.40	0.14%
Dues & Memberships	\$250.00	0.03%
Education & Training	\$3,273.51	0.41%
Fire Inspections	\$29.50	0.00%
Fuel & Mileage Reimbursements	\$13,561.67	1.72%
HotSpots & Cell Phone Reimbursements	\$4,941.20	0.63%
In-Home Therapy Services	\$44,536.50	5.63%
Insurance Overpayment & Cost Report Settlement	\$6,027.99	0.76%
Liability/Property Insurance	\$6,279.14	0.79%
Medical Supplies	\$2,848.76	0.36%
Physicals/Background	\$521.00	0.07%
Office Phone & Internet	\$2,256.15	0.29%
Office Utilities	\$2,886.23	0.37%
Office/Program Supplies	\$94,582.58	11.96%
Postage	\$483.44	0.06%
Vaccines	\$5,769.71	0.73%
Insurance	\$3,617.00	0.46%
Total BCHD Generated Expense	\$790,571.91	100.00%
Percent of BCHD Budget Used		98.89%

Home Health Program

In fiscal year 2021 (FY21), the BCHD was a Medicare Certified Home Health Agency from July 1, 2020 to February 1, 2021. In a special Bremer County Board of Health meeting on October 14, 2020, the board unanimously voted to no longer participate in the Medicare Program (Title XVII of the Social Security Act) effective February 1, 2021.

BCHD started FY21 with 15 employees and ended FY21 with 5 employees due to decertifying from the Medicare Program.

BCHD continues to provide decertified home care aide services (personal cares and homemaking).

FY21 Home Health Statistics-Total Visits by Discipline			
Discipline	Medicare	Other	Total
Skilled Nursing Care	226	339	625
Physical Therapy	114	119	233
Occupational Therapy	50	52	102
Speech Therapy	13	32	45
Medical Social Service	0	1	1
Home Health Aide	370	1247	1617
All Other Services (Homemaking)		250	250

FY21 Home Health Statistics-Total Patients by Discipline			
Discipline	Medicare	Other	Total
Skilled Nursing Care	29	76	105
Physical Therapy	17	23	40
Occupational Therapy	13	15	28
Speech Therapy	5	4	9
Medical Social Service	0	1	1
Home Health Aide	17	45	62
All Other Services (Homemaking)		14	14

Public Health Programs

The Bremer County Board of Health, BCHD Administrator and BCHD staff work together to make decisions regarding public health services through the use of the Community Health Needs Assessment and Health Improvement Plan (CHNA-HIP) process. Programming is directed toward meeting the goals of the CHNA-HIP which targets health risk factors within residents of Bremer County. BCHD exists to provide Iowa Code mandated and gap-filling programming specific to the health risks of the people who live in Bremer County.

CHNA-HIP Health Targets

Promote Healthy Living

- Decrease Addictive Behaviors
- Decrease Chronic Disease
- Increase Healthy Behaviors

Prevent Injuries

- Decrease Unintentional Injury

Protect Against Environmental Hazards

- Identify Water Quality Concerns
- Identify Air Quality Concerns

Prevent Epidemics and the Spread of Disease

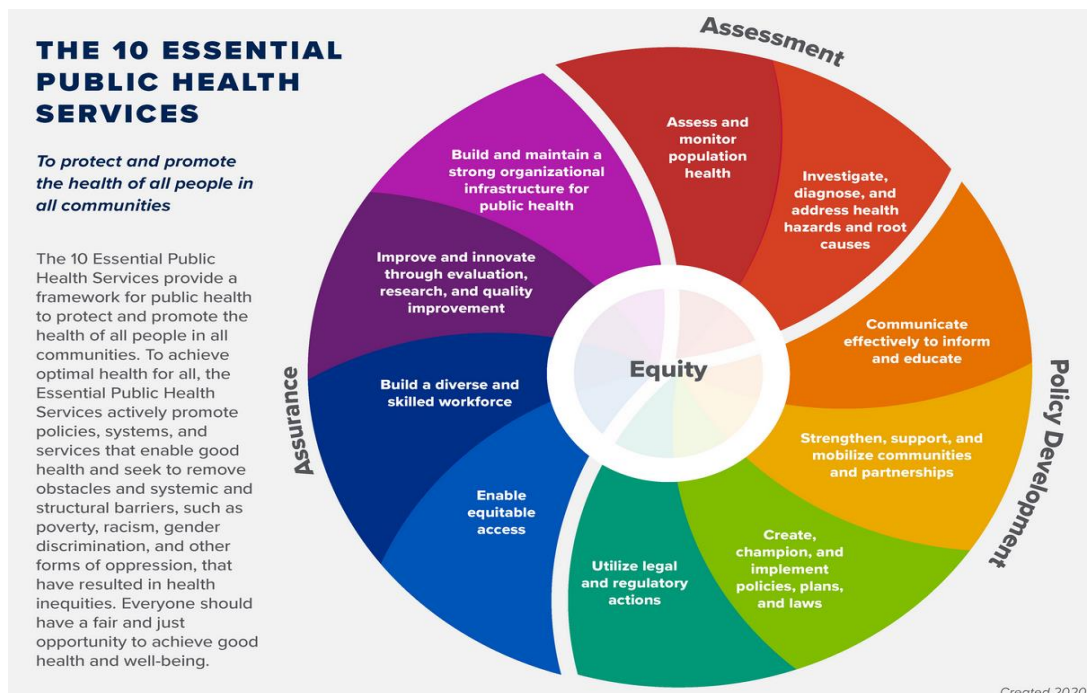
- Decrease Disease Spread
- Increase Vaccination Rates

Prepare for, Respond to, & Recover from Public Health Emergencies

- Decrease Risk of Injury & Death by Increasing Individual Preparedness

Strengthen the Health Infrastructure

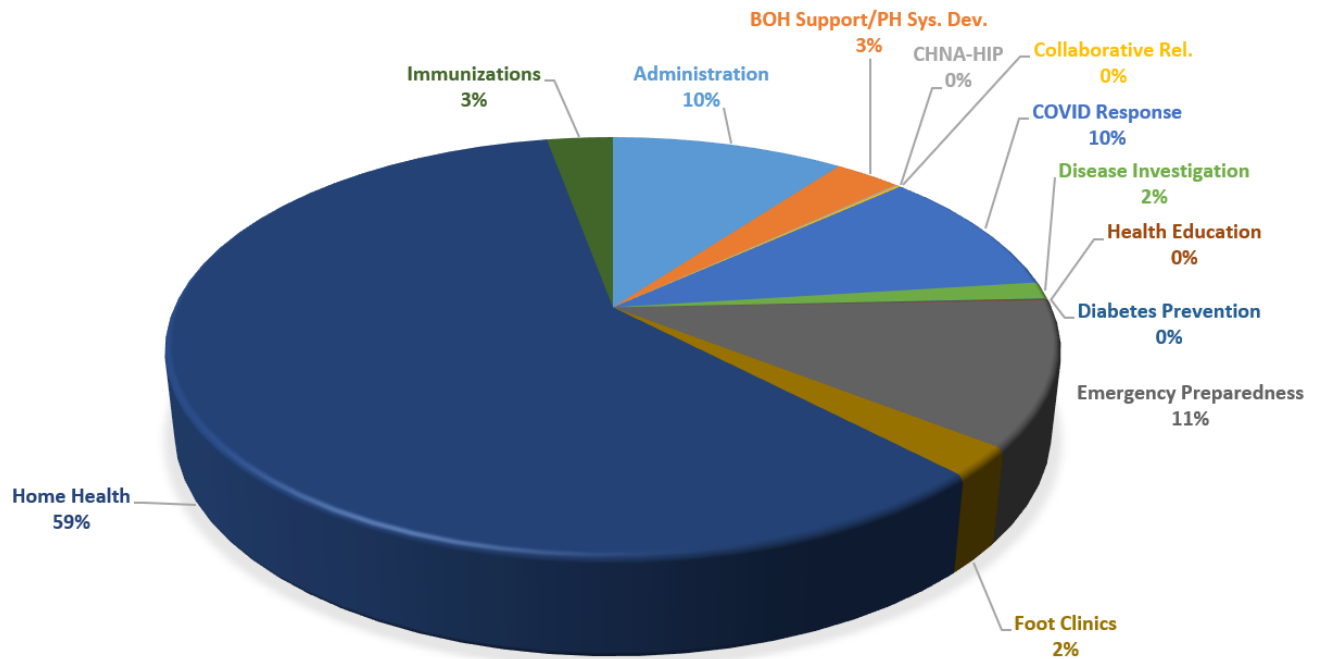
- Decrease Healthcare Burden



Public Health Programs Continued...

BCHD staff spent time in many different areas to support areas of strengths and improve areas of weakness identified in the CHNA-HIP, fill service gaps, and perform Iowa law mandated obligations. Due to the COVID-19 Pandemic, the majority of FY21 focused on the COVID-19 response.

Here is a break-down of how time was utilized at BCHD in FY21:



Public Health Programs Continued....

Administration A total of 1,936.39 hours were spent in this category. Much of this time was related to duties for the Administrator, Clinical Manager/Deputy Administrator and office assistants.

Board of Health (BOH) Support/Public Health System Development A total of 549.90 hours were dedicated to BOH support, including serving as a liaison between the Board and Board of Supervisors, preparing for and attending meetings, compiling minutes, updating policies, budgets and staff management.

CHNA-HIP A total of 22.33 hours were spent finding and reviewing health data for Bremer County.

Collaborative Relationships A total of 23 hours were spent attending meetings and working with other community resources. BCHD is involved in several community groups relating to issues such as tobacco use prevention, mental health, healthy lifestyles, emergency preparedness, and injury prevention.

COVID Response A total of 1,868.11 hours were spent responding to COVID-19 in Bremer County.

Diabetes Prevention Program A total of 14.58 hours were dedicated to supporting a group of individuals with pre-diabetes in developing healthy lifestyle changes in order to prevent developing type 2 diabetes.

Disease Investigation A total of 251.18 hours were spent conducting immunization card reviews in Bremer County schools and licensed day care facilities, and conducting reportable disease investigations.

Health Education A total of 12.91 hours were spent educating the public about topics such as healthy lifestyle, immunizations, and emergency preparedness.

Emergency Preparedness A total of 2,139.97 hours were spent in preparing and collaborating with local, regional and state partners. The focus of FY21 was point of dispensing plans in preparation for COVID-19 mass vaccine clinics, but that could also be implemented during other pandemics or terrorism events.

Foot Clinics A total of 433.11 hours were spent in preparing for and providing foot cares to individuals 55 years of age or older and/or individuals who are disabled and unable to manage their own foot care. Clinics were offered once a month in Plainfield, Waverly, Sumner, Tripoli, Readlyn and Denver.

Home Health A total of 11,344.25 hours providing patient cares in skilled nursing, home care aide and homemaking.

Immunizations A total of 547.54 hours were spent providing non-COVID vaccines such as influenza, Hep B, and vaccines to children who qualify under the Vaccines for Children program. This also included time spent working to increase all required vaccine immunization rates in Bremer County.

**All Bremer County Health Department programs
can be reached by phoning (319) 352-0082**

Visit us online at:

https://www.bremercounty.iowa.gov/departments/health_department/index.php

Find us on Facebook at:

<https://www.facebook.com/bremercountyhealthdepartment/>

